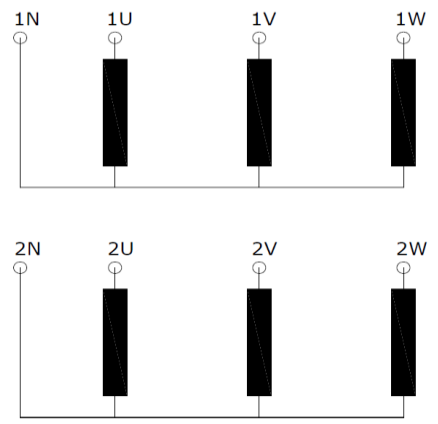
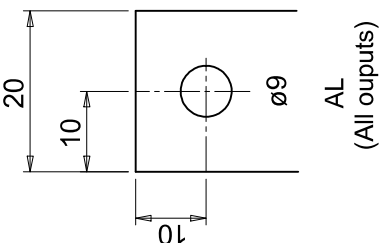
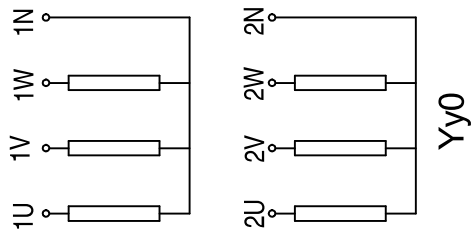
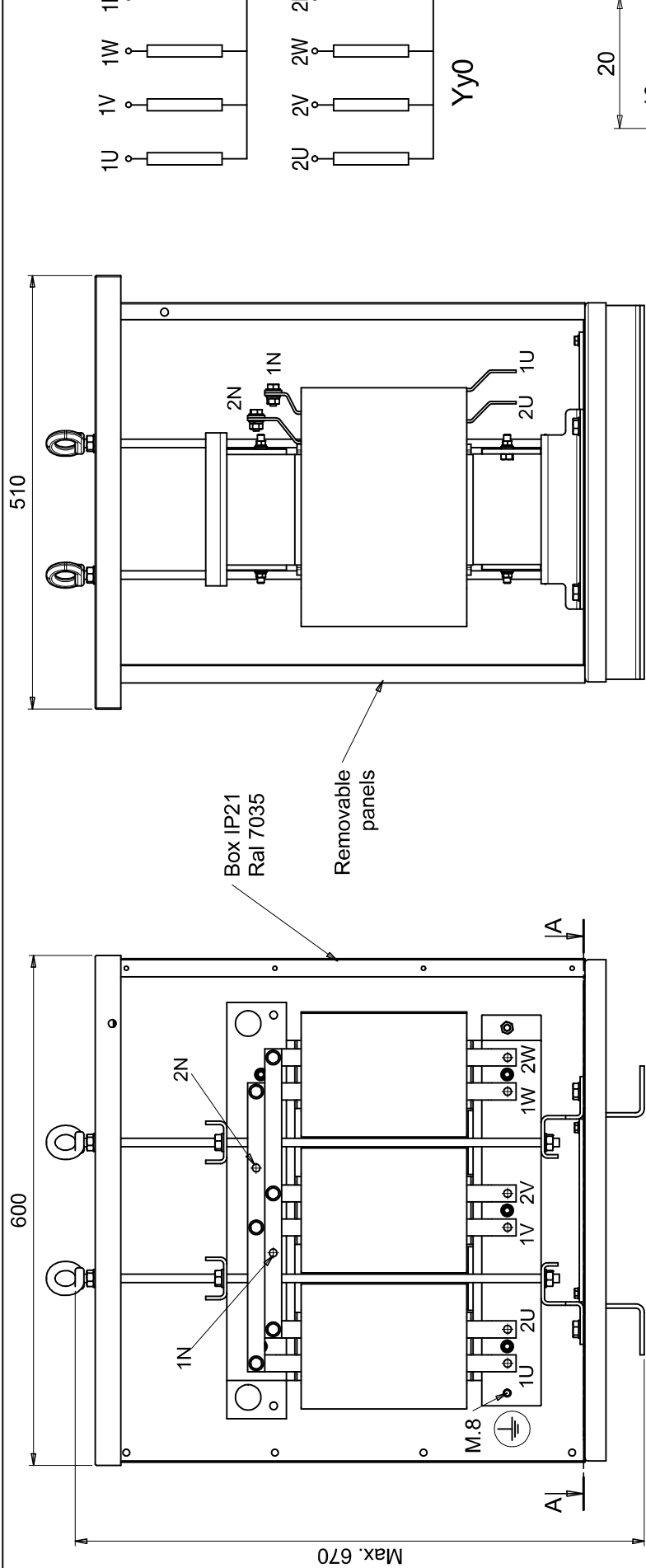
 TRAFOMECC EUROPE S.A.		Issued	Electrical Approved	Approved	Code	Document	Rev
DATE		16/01/2019	16/01/2019	16/01/2019	F2224E	DS00CPS	A
SIGNATURE		Mechelli	Fuschiotto	Pacilli			
Trafomec Type	T3-0040-03	Customer	UNIROM	Ref.	T3-0040-03		
<div style="border: 1px solid black; padding: 20px; transform: rotate(-10deg); display: inline-block;"> draft </div>				Connection			
							
				Thermal Sensors			
				None			
TECHNICAL CHARACTERISTICS							
Dry Type Three-phase Transformer							
Core Technology		3 Limbs Iron Core					
Nominal Power	kVA	40	CLASSES		E1	C1	F0
Primary Nominal voltage	V	400	Max winding overtemperature		K	115	
Primary current	A	57,8	Altitude		m	< 1000	
Secondary voltage NO LOAD	V	400	Ambient temperature		°C	40	
Secondary current	A	57,8	Insulation class		H		
Frequency	Hz	50	Duty cycle		Continuous		
				Protection of Windings		VPI Impregnation	
Short circuit voltage 115°C	%	3,0%	Protection		IP21 - RAL7035		
Vector group	YNyn0		Winding Losses @ 115°C		W	1100	
Primary insulation test	kV	3	Iron losses @Nominal Voltage		W	300	
Secondary insulation test	kV	3	Total Losses @ 115°C		W	1400	
				Width dimension IP21		mm	600
Conductor Material	Aluminum		Depth dimension IP21		mm	510	
Insulation Class	H		Height dimension IP21		mm	670	
				Weight IP21		kg	180
STANDARD ACCESSORIES:		Lifting Eye Bolts, Earthing Points, Rating Plate					
STANDARD TESTING:		Acceptance testing and tolerances in compliance with IEC 60076-11 Type testing and/or any other testing to be agree in order case					
DOCUMENTATION:		Routine test certificates in compliance with IEC 60076-11 Other documents to be agree in order case					
Modulo MDP202		Pag. 1		di 1		rev. 0	
Data 15/07/2015							



**Input line to line voltage 400Vac 50Hz
line to neutral voltage 230Vac**

**Output line to line voltage 400Vac 50Hz
line to neutral voltage 230Vac**

Dismatches max. for linear dimensions with no tolerance indications (in millimeters), according to UNI-EN 22768-1 c (rough class)		Bending radius not quoted: 1 + 1,3 times the beaded thickness		Superficial and/or thermal treatments	
DRAWN	CHECKED	APPROVED	MATERIAL	WEIGHT/kg	----
08/04/2019	08/04/2019	08/04/2019		180	
SIGNATURE	foerbinini	omencarelli	DESCRIPTION	SCALE	DOCUMENT
		mmechelli	T3-0040-04 IP21	1:4	00CPSD02
			40 kVA		
			CODE		
			F2224E		



Rev.	A	UPDATED	Descrizione Modifica	foerbinini	Dis.	omencarelli	Cont.	mmechelli	Approv.	11-04-2019	Data
------	---	---------	----------------------	------------	------	-------------	-------	-----------	---------	------------	------